

**Class "A" Office
Available For Lease**

The Office Park at Eberly Farm

(13203 W. 21st Street)



- Premier Northwest Wichita Location
- Abundant Drive Up Parking
- Flexible Floor Plans
- Space available from:
1,500 Sq. Ft. to 15,000 Sq. Ft.
- Private entrances
- Natural setting with extensive landscaping and scenic views
- Perfect location for financial, medical and general office uses
- Custom turnkey finish available



This true Class "A" Office Development is strategically located in the heart of growth in Northwest Wichita near shops, restaurants, the new YMCA and Via Christi St. Teresa Hospital.

The Development features a natural setting with abundant landscaping, and generous door-side parking.

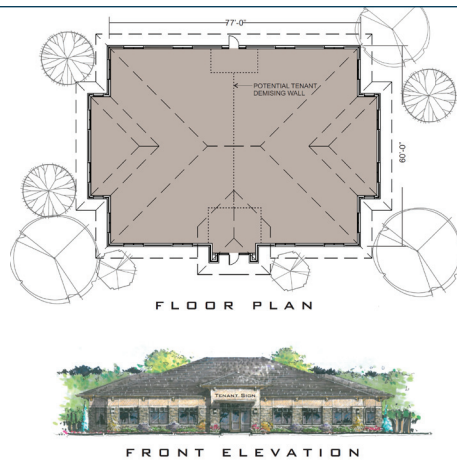
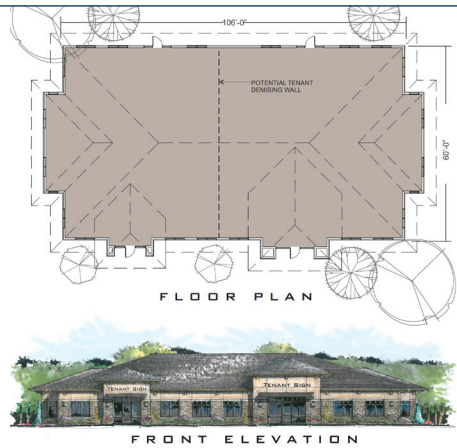
The natural stone construction with concrete tile roofs are of a quality not currently available in Northwest Wichita!

To reserve your space in this exciting new development contact:

Carl Hebert, CCIM
316-618-1100
cjhebert@insitere.com

Curt Robertson
316-618-1100
crobertson@insitere.com





∴ Class "A" Office Available For Lease

The Office Park at Eberly Farm
 (13203 W. 21st Street)

InSite

Real • Estate • Group
 608 W. Douglas, Suite 106
 Wichita, KS 67203